
Rearranging Stata's output for the analysis of epidemiological tables

5ª Reunión de Usuarios Españoles de Stata
Barcelona, 12/09/2012

Aurelio Tobías

IDAEA-CSIC, Barcelona

aurelio.tobias@gmail.com

<http://aureliotobias.weebly.com/>

id^æa

 **CSIC**
CONSEJO SUPERIOR DE INVESTIGACIONES CIENTÍFICAS

Background

- In epidemiological research we usually investigate the relationship between a binary response (C/nC) and a binary exposure (E/nE)



Background

- A major capability in Stata is the analysis of epidemiological tables by using any of the **epitab** commands
- These report measures of frequency (proportion or odds), association (risk difference, relative risk, or odds ratio) and impact on public health (attributable risks)

```
. use example 1, clear
```

```
Contains data from example1.dta
```

```
obs:      8  
vars:     4
```

```
-----  
                storage  display  value  
variable name  type     format   label   variable label  
-----  
y              byte     %8.0g   cc      Response  
x              byte     %8.0g   yn      Exposure  
z              byte     %8.0g   yn      Other  
N              int      %8.0g  
-----
```

```
. list, noobs
```

```
+-----+  
|      y      x      z      N |  
+-----+  
| control   no    no    131 |  
| control   no    yes   234 |  
| control   yes   no    650 |  
| control   yes   yes   295 |  
| case      no    no    122 |  
| case      no    yes    78 |  
| case      yes   no    660 |  
| case      yes   yes   450 |  
+-----+
```

```
. expand N
```

```
(2612 observations created)
```

. cs y x

	Exposure		
	Exposed	Unexposed	Total
Cases	1110	200	1310
Noncases	945	365	1310
Total	2055	565	2620
Risk	.540146	.3539823	.5
	Point estimate		[95% Conf. Interval]
Risk difference	.1861637		.1412291 .2310982
Risk ratio	1.525912		1.355638 1.717574
Attr. frac. ex.	.3446544		.2623399 .4177835
Attr. frac. pop	.2920354		
	chi2(1) = 61.43 Pr>chi2 = 0.0000		

. cc y x

	Exposed	Unexposed	Total	Proportion Exposed
Cases	1110	200	1310	0.8473
Controls	945	365	1310	0.7214
Total	2055	565	2620	0.7844
	Point estimate		[95% Conf. Interval]	
Odds ratio	2.143651		1.759248	2.612501
Attr. frac. ex.	.5335061		.4315754	.617225
Attr. frac. pop	.4520548			

chi2(1) = 61.43 Pr>chi2 = 0.0000

. cc y x

	Exposed	Unexposed	Total	
Cases	1110	200	1310	
Controls	945	365	1310	
Total	2055	565	2620	
Odds	.54795	1.17460		
	Point estimate		[95% Conf. Interval]	
Odds ratio	2.143651		1.759248	2.612501
Attr. frac. ex.	.5335061		.4315754	.617225
Attr. frac. pop	.4520548			
	chi2(1) =		61.43	Pr>chi2 = 0.0000

. tabodds y x

x	cases	controls	odds	[95% Conf. Interval]	
no	200	365	0.54795	0.46116	0.65106
yes	1110	945	1.17460	1.07700	1.28105

. tabodds y x, or

x	Odds Ratio	chi2	P>chi2	[95% Conf. Interval]	
no	1.000000
yes	2.143651	61.41	0.0000	1.763229	2.606149

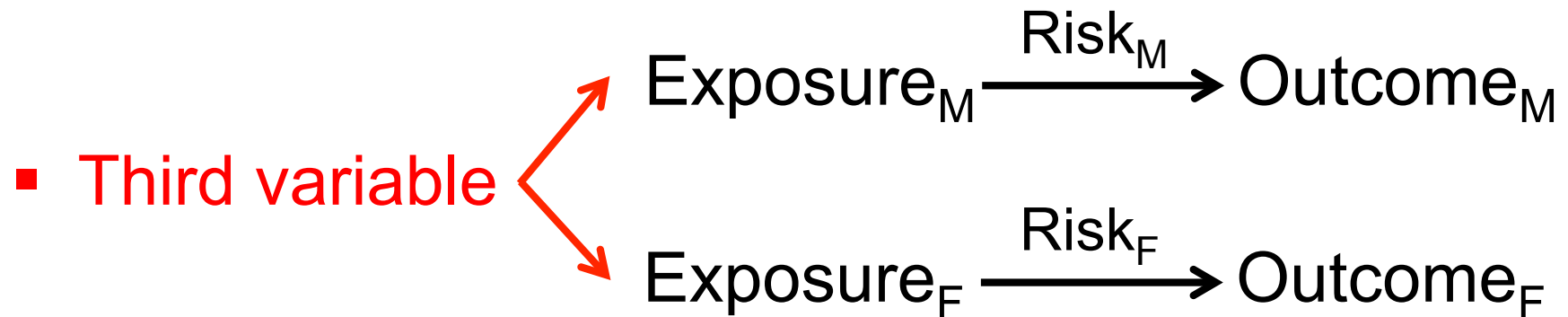
. mhodds y x

Maximum likelihood estimate of the odds ratio
Comparing x==1 vs. x==0

Odds Ratio	chi2(1)	P>chi2	[95% Conf. Interval]	
2.143651	61.41	0.0000	1.763229	2.606149

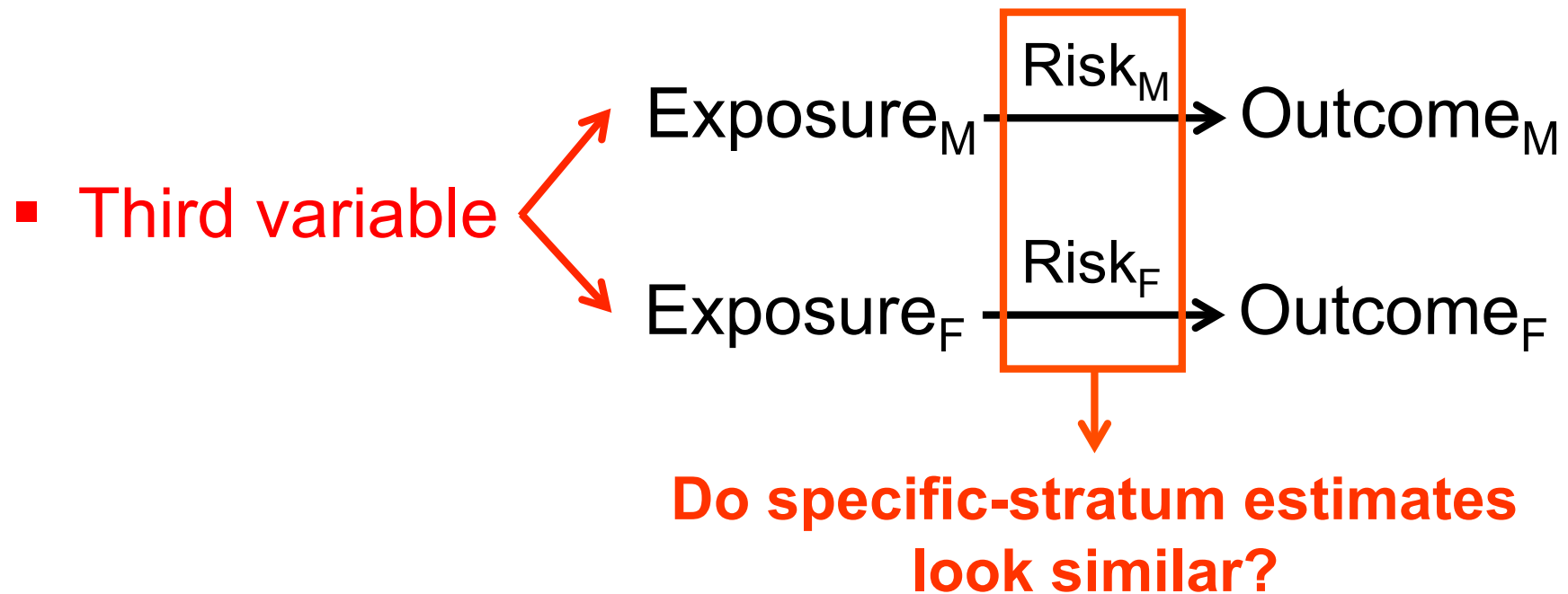
Stratified analysis

- Analyse the relationship between the binary response (C/nC) and the binary exposure (E/nE) for each stratum taken by a third variable (M/F)



Stratified analysis

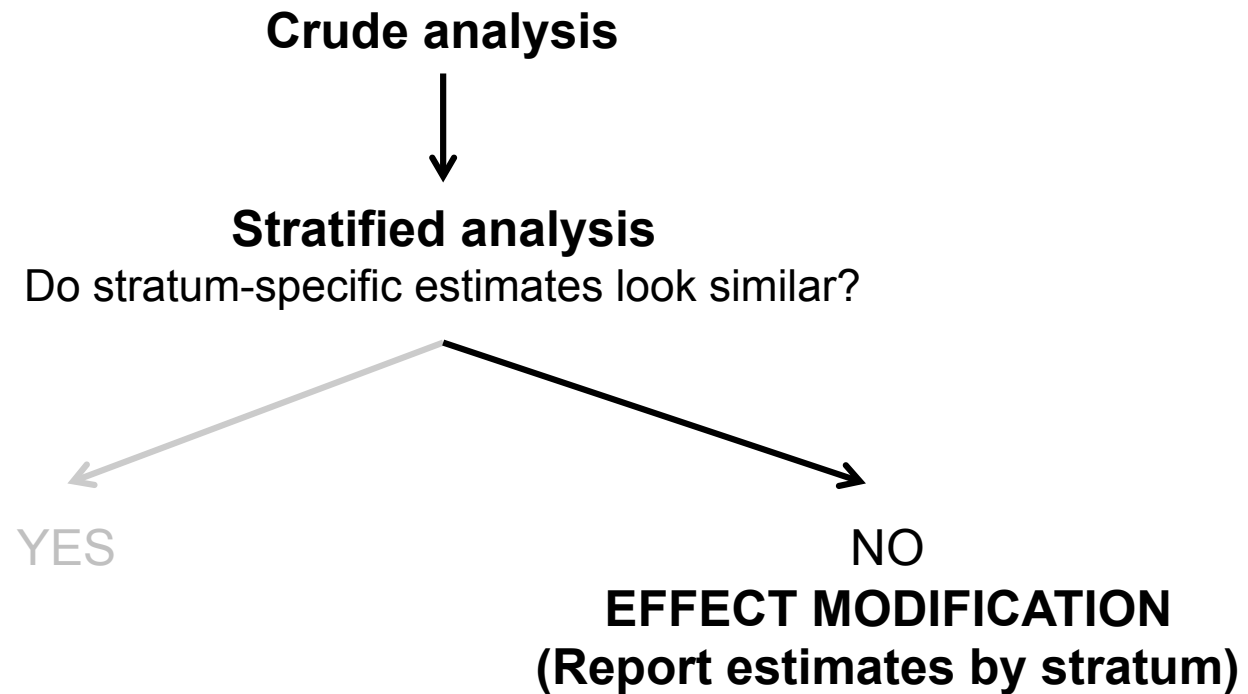
- Analyse the relationship between the binary response (C/nC) and the binary exposure (E/nE) for each stratum taken by a third variable (M/F)



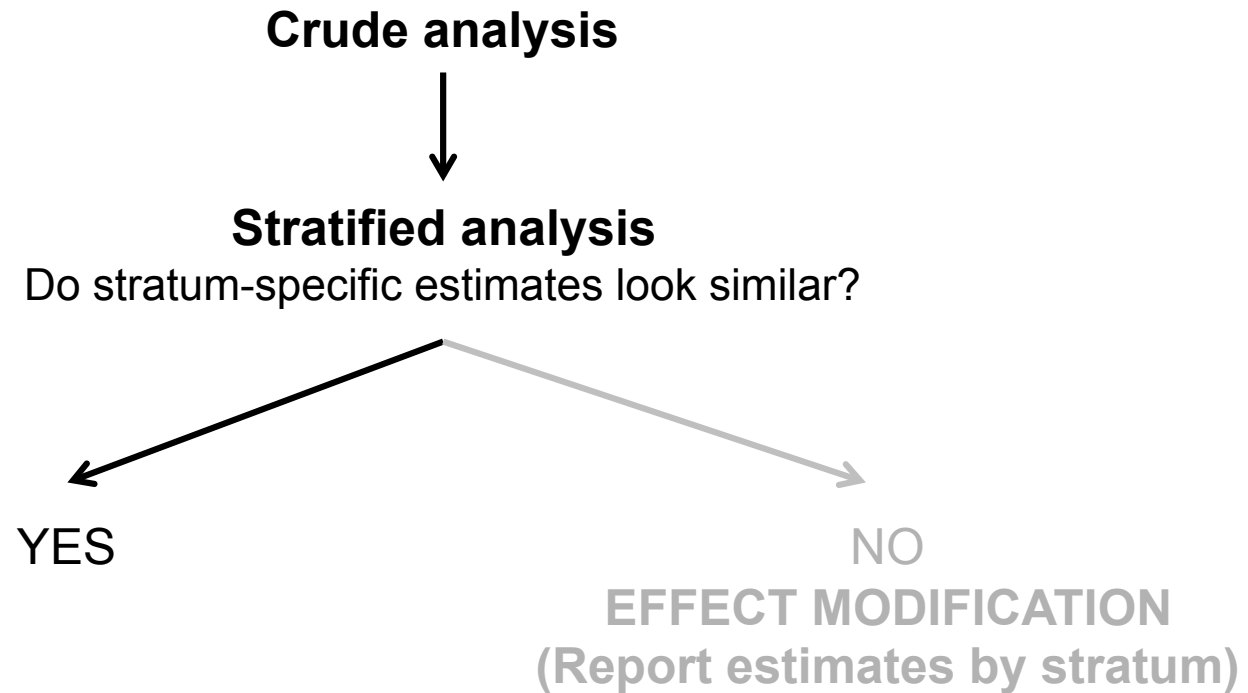
Effect modification

- Variation in the magnitude of measure of effect across strata of a third variable (subgroups of population)
- Can be tested for by using an statistical test for homogeneity

How to conduct an stratified analysis?



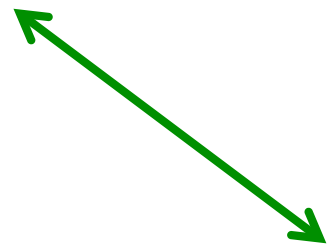
How to conduct an stratified analysis?



Confounding

- Distortion in the of measure of effect because of a third variable

■ Exposure \longrightarrow Outcome



Third
variable



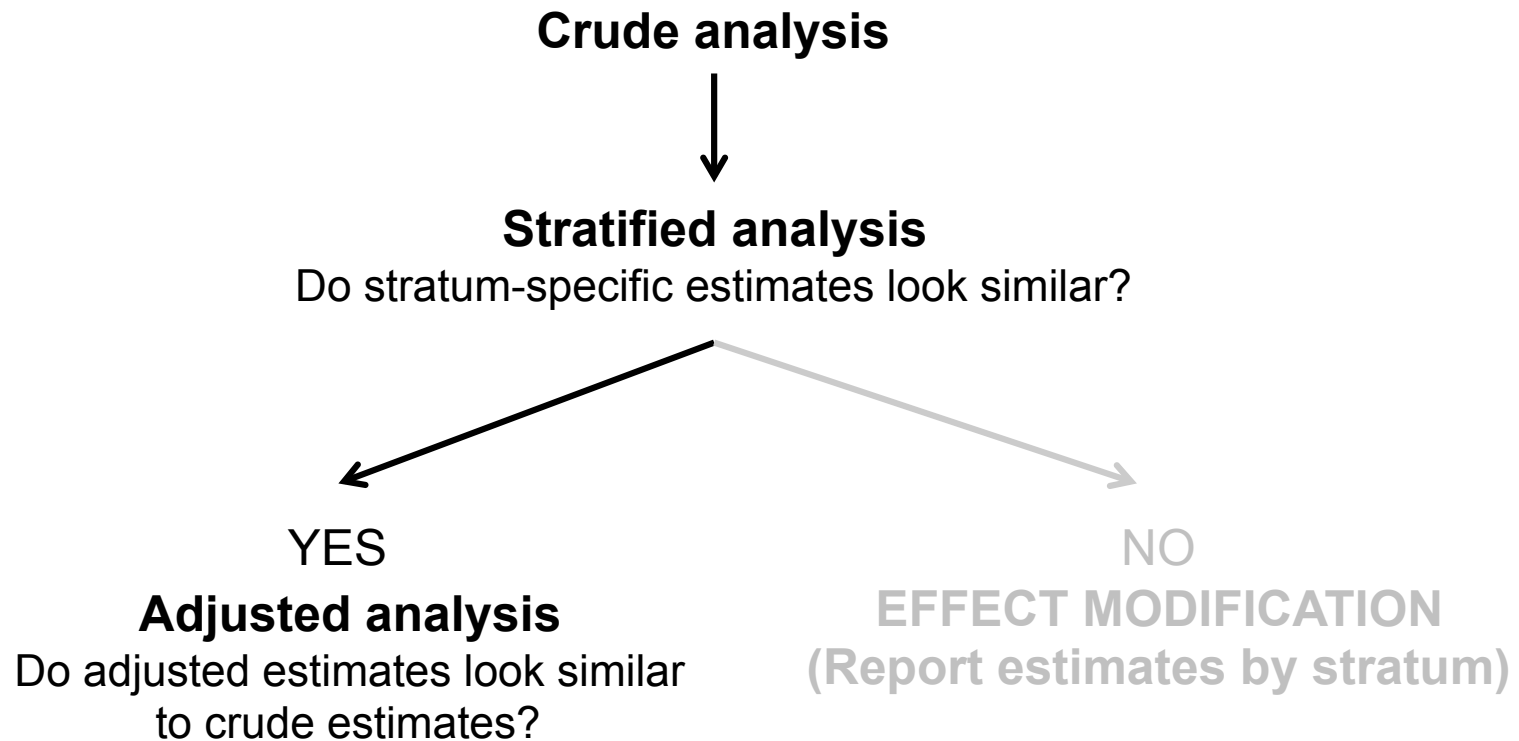
- Be associated with outcome, independently of exposure

- Be associated with exposure, without being the consequence of exposure

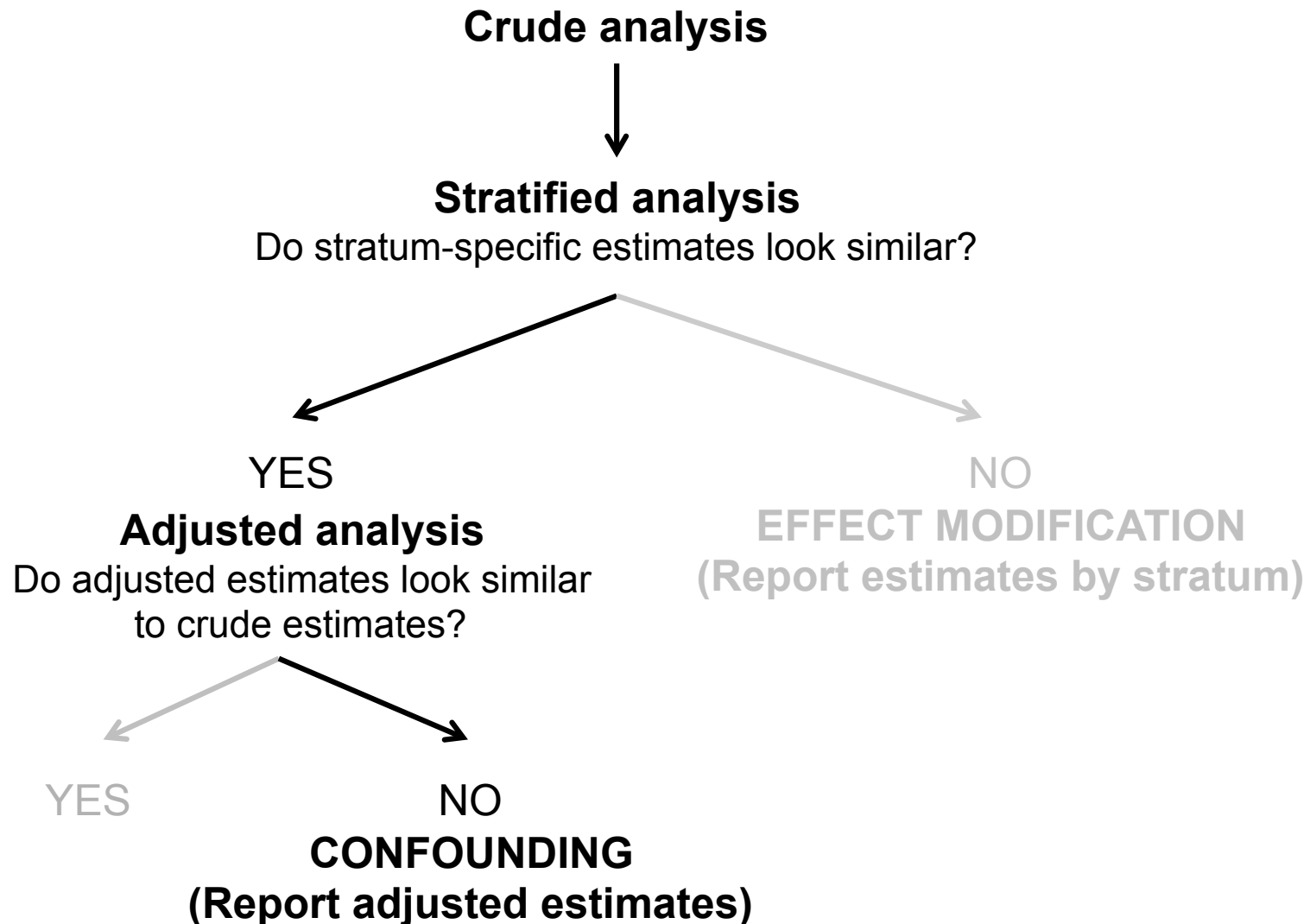
Confounding

- A confounder influences (bias) the effect of a exposure in the same way for everyone
- Needs to be adjusted for
- There is not statistical test to check for confounding, it is usually assessed by comparing crude and adjusted estimates

How to conduct an stratified analysis?



How to conduct an stratified analysis?



Stratified analysis

- Any of the **epitab** commands jointly with the **by ()** option allow to run stratified analyses reporting; specific stratum measures of association, a test of homogeneity, as well as the crude and adjusted estimates
- These allow to epidemiologists to check for effect modification or to assess for confounding
- However ... users are still being confused about how Stata reports stratified analyses

. cc y x, by(z)

Other		OR	[95% Conf. Interval]		M-H Weight
-----+-----					
no		1.09029	.8252907	1.440924	50.73576
yes		4.576271	3.375437	6.229908	21.76916
-----+-----					
Crude		2.143651	1.759248	2.612501	
M-H combined		2.136934	1.76373	2.589109	

Test of homogeneity (M-H)		chi2(1) =	49.52	Pr>chi2 =	0.0000

Test that combined OR = 1:

Mantel-Haenszel chi2(1) = 62.88
Pr>chi2 = 0.0000

```
. cc y x, by(z)
```

Other	OR	[95% Conf. Interval]		M-H Weight
no	1.09029	.8252907	1.440924	50.73576
yes	4.576271	3.375437	6.229908	21.76916
Crude	2.143651	1.759248	2.612501	
M-H combined	2.136934	1.76373	2.589109	

Test of homogeneity (M-H) chi2(1) = 49.52 Pr>chi2 = 0.0000

Do stratum-specific estimates look similar?

Test that combined OR = 1:

Mantel-Haenszel chi2(1) = 62.88
Pr>chi2 = 0.0000

- Misleading p-value

. cc y x, by(z)

Other	OR	[95% Conf. Interval]	M-H Weight
no	1.09029	.8252907 1.440924	50.73576
yes	4.576271	3.375437 6.229908	21.76916
Crude	2.143651	1.759248 2.612501	
M-H combined	2.136934	1.76373 2.589109	

Test of homogeneity (M-H) chi2(1) = 49.52 Pr>chi2 = 0.0000

Test that combined OR = 1:
Mantel-Haenszel chi2(1) = 62.88
Pr>chi2 = 0.0000

$H_0: OR=1$

- Misleading p-value

```
. cc y x, by(z)
```

Other		OR	[95% Conf. Interval]		M-H Weight
no		1.09029	.8252907	1.440924	50.73576
yes		4.576271	3.375437	6.229908	21.76916
-----+					
Crude		2.143651	1.759248	2.612501	
M-H combined		2.136934	1.76373	2.589109	

Test of homogeneity (M-H)		chi2(1) =	49.52	Pr>chi2 =	0.0000

Test that combined OR = 1:

Mantel-Haenszel chi2(1) = 62.88
Pr>chi2 = 0.0000

- Misleading p-values
- No p-values for specific-stratum and crude estimates
- Missing the relative change between the crude and adjusted estimates

. mhdods y x, by(z)

Maximum likelihood estimate of the odds ratio
Comparing x==1 vs. x==0
by z

z	Odds Ratio	chi2(1)	P>chi2	[95% Conf. Interval]	
no	1.090290	0.40	0.5294	0.83276	1.42746
yes	4.576271	110.14	0.0000	3.34905	6.25319

Mantel-Haenszel estimate controlling for z

Odds Ratio	chi2(1)	P>chi2	[95% Conf. Interval]	
2.136934	62.88	0.0000	1.763202	2.589884

Test of homogeneity of ORs (approx): chi2(1) = 48.86
Pr>chi2 = 0.0000


```
. mlogit y x, by(z)
```

Maximum likelihood estimate of the odds ratio
Comparing x==1 vs. x==0
by z

z	Odds Ratio	chi2(1)	P>chi2	[95% Conf. Interval]	
no	1.090290	0.40	0.5294	0.83276	1.42746
yes	4.576271	110.14	0.0000	3.34905	6.25319

Mantel-Haenszel estimate controlling for z

Odds Ratio	chi2(1)	P>chi2	[95% Conf. Interval]	
2.136934	62.88	0.0000	1.763202	2.589884

Test of homogeneity of ORs (approx): chi2(1) = 48.86
Pr>chi2 = 0.0000

Do stratum-specific estimates look similar?

- Another misleading p-value

```
. mlogit y x, by(z)
```

Maximum likelihood estimate of the odds ratio
Comparing x==1 vs. x==0
by z

z	Odds Ratio	chi2(1)	P>chi2	[95% Conf. Interval]	
no	1.090290	0.40	0.5294	0.83276	1.42746
yes	4.576271	110.14	0.0000	3.34905	6.25319

Mantel-Haenszel estimate controlling for z

Odds Ratio	chi2(1)	P>chi2	[95% Conf. Interval]	
2.136934	62.88	0.0000	1.763202	2.589884

Test of homogeneity of ORs (approx): chi2(1) = 48.86
Pr>chi2 = 0.0000

- Another misleading p-value
- Missing the crude estimate, and the relative change between the crude and adjusted estimates

Rearranging the output

- Rearrange the output of the **epitab** commands from the scheme of a classic epidemiological analysis
 - Specific stratum estimates, with 95%CI and p-values
 - Test of homogeneity (to check for effect modification)
 - Crude and adjusted estimates, with 95%CI and p-values
 - Relative change between them (to assess for confounding)

. mymhoods y x, by(z)

Stratified analysis with test for effect modification

z	Odds Ratio	[95% Conf. Interval]	chi2(1)	P>chi2
no	1.09029	.832758 1.42746	0.40	0.5294
yes	4.57627	3.34905 6.25319	110.14	0.0000

Test of homogeneity of ORs (approx): chi2(1) = 48.86 , P>chi2 = 0.0000

Adjusted analysis with assessment for confounding

	Odds Ratio	[95% Conf. Interval]	chi2(1)	P>chi2
Crude	2.14365	1.76323 2.60615	61.41	0.0000
Adjusted	2.13693	1.7632 2.58988	62.88	0.0000

Adjusted/crude relative change = -0.31%

```
. use example2, clear
```

```
. expand N
```

```
(2612 observations created)
```

```
. mymehodds y x, by(z)
```

Stratified analysis with test for effect modification

z	Odds Ratio	[95% Conf. Interval]	chi2(1)	P>chi2
no	5.57126	3.45525 8.98315	63.13	0.0000
yes	5.61665	3.42494 9.21089	59.58	0.0000

Test of homogeneity of ORs (approx): chi2(1) = 0.00 , P>chi2 = 0.9815

Adjusted analysis with assessment for confounding

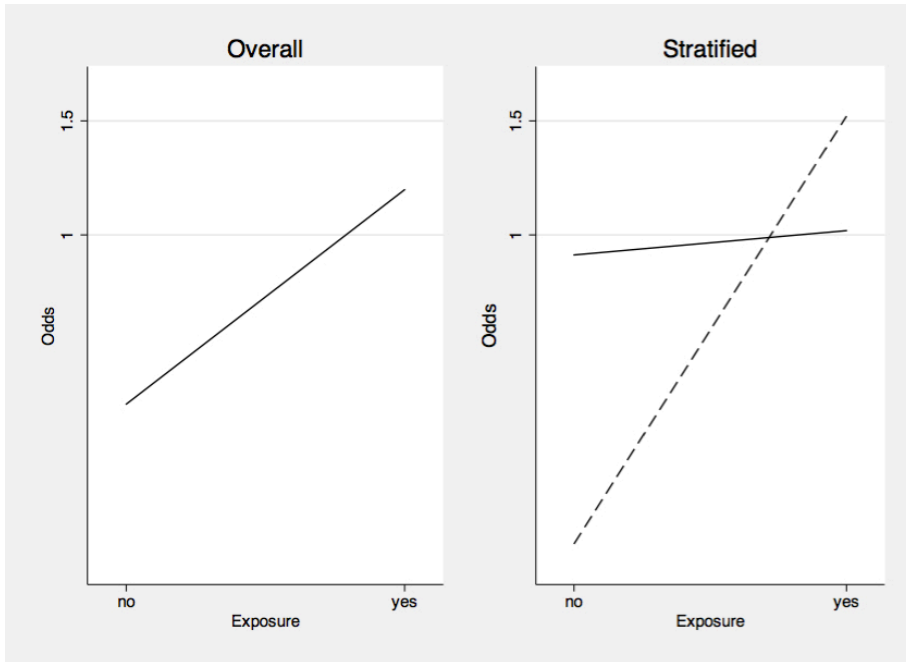
	Odds Ratio	[95% Conf. Interval]	chi2(1)	P>chi2
Crude	2.14365	1.76323 2.60615	61.41	0.0000
Adjusted	5.59398	3.96622 7.88980	122.56	0.0000

Adjusted/crude relative change = 160.96%

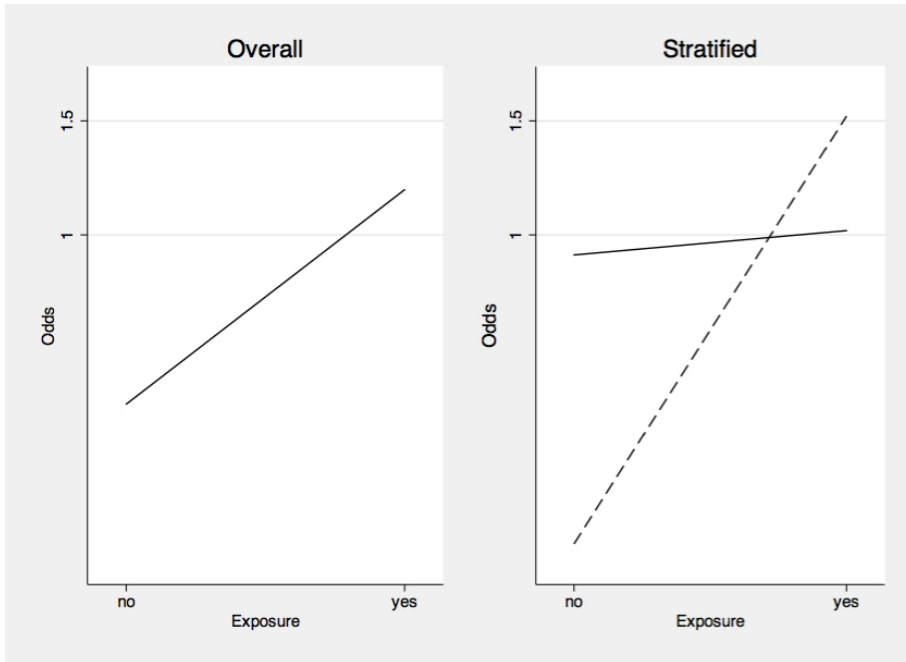
Rearranging the output

- Rearrange the output of the **epitab** commands from the scheme of a classic epidemiological analysis
 - Specific stratum estimates, with 95%CI and p-values
 - Test of homogeneity (to check for effect modification)
 - Crude and adjusted estimates, with 95%CI and p-values
 - Relative change between them (to assess for confounding)
- Furthermore, graphs are always helpful ... and nice!

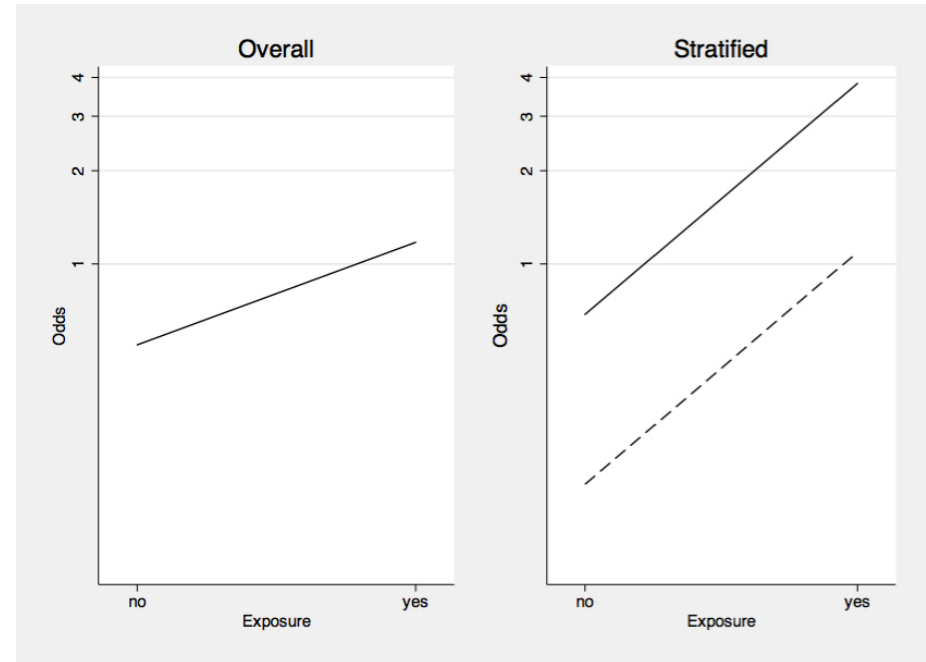
- . use `example1, clear`
- . `expand N`
- . `mymh odds y x, by(z) graphs`



```
. use example1, clear
. expand N
. mymhodds y x, by(z) graphs
```



```
. use example2, clear
. expand N
. mymhodds y x, by(z) graphs
```



Conclusions

- Stata is mainly used in epidemiological research thanks to the **epitab** commands
- The **cc** command must also display the odds
- **epitab** commands with capabilities to run stratified analysis with the **by()** option (**cs**, **cc**, **ir**, and **mhodds**) must rearrange their output to address effect modification and confounding in a easiest way
- **diagt** (SJ4-4) command should also be included in **epitab** to cover all types of study designs in epidemiological research

Rearranging Stata's output for the analysis of epidemiological tables

5ª Reunión de Usuarios Españoles de Stata
Barcelona, 12/09/2012

Aurelio Tobías

IDAEA-CSIC, Barcelona

aurelio.tobias@gmail.com

<http://aureliotobias.weebly.com/>

id^aæ^a

 **CSIC**
CONSEJO SUPERIOR DE INVESTIGACIONES CIENTÍFICAS