

graph twoway mband — Twoway median-band plots

[Syntax](#)[Remarks and examples](#)[Menu](#)[Also see](#)[Description](#)[Options](#)

Syntax

```
twoway mband yvar xvar [if] [in] [, options]
```

<i>options</i>	Description
bands(#)	number of bands
cline_options	change look of the line
axis_choice_options	associate plot with alternative axis
twoway_options	titles, legends, axes, added lines and text, by, regions, name, aspect ratio, etc.

See [\[G-3\] cline_options](#), [\[G-3\] axis_choice_options](#), and [\[G-3\] twoway_options](#).

All options are *rightmost*; see [\[G-4\] concept: repeated options](#).

Menu

Graphics > Twoway graph (scatter, line, etc.)

Description

`twoway mband` calculates cross medians and then graphs the cross medians as a line plot.

Options

`bands(#)` specifies the number of bands on which the calculation is to be based. The default is $\max(10, \text{round}(10 \times \log_{10}(N)))$, where N is the number of observations.

In a median-band plot, the x axis is divided into $\#$ equal-width intervals and then the median of y and the median of x are calculated in each interval. It is these cross medians that `mband` graphs as a line plot.

`cline_options` specify how the median-band line is rendered and its appearance; see [\[G-3\] cline_options](#).

`axis_choice_options` associate the plot with a particular y or x axis on the graph; see [\[G-3\] axis_choice_options](#).

`twoway_options` are a set of common options supported by all `twoway` graphs. These options allow you to title graphs, name graphs, control axes and legends, add lines and text, set aspect ratios, create graphs over `by()` groups, and change some advanced settings. See [\[G-3\] twoway_options](#).

Remarks and examples

Remarks are presented under the following headings:

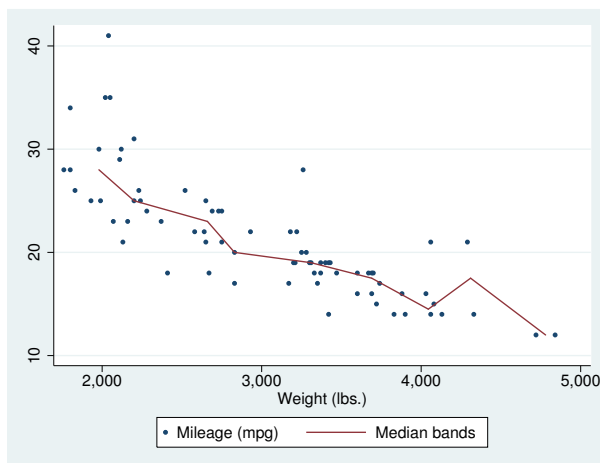
Typical use

Use with by()

Typical use

Median bands provide a convenient but crude way to show the tendency in the relationship between y and x :

```
. use http://www.stata-press.com/data/r13/auto  
(1978 Automobile Data)  
. scatter mpg weight, msize(*.5) || mband mpg weight
```

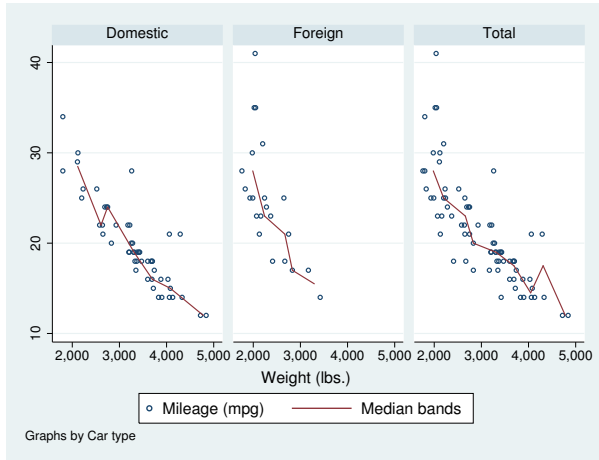


The important part of the above is “mband mpg weight”. On the `scatter`, we specified `msize(*.5)` to make the marker symbols half their normal size; see [\[G-4\] relativesize](#).

Use with by()

`mband` may be used with `by()` (as can all the `twoway` plot commands):

```
. scatter mpg weight, ms(oh) ||
  mband mpg weight ||, by(foreign, total row(1))
```



In the above graph, we specified `ms(oh)` so as to use hollow symbols; see [G-4] [symbolstyle](#).

Also see

[G-2] [graph twoway line](#) — Twoway line plots

[G-2] [graph twoway mspline](#) — Twoway median-spline plots

[G-2] [graph twoway lfit](#) — Twoway linear prediction plots

[G-2] [graph twoway qfit](#) — Twoway quadratic prediction plots

[G-2] [graph twoway fpfit](#) — Twoway fractional-polynomial prediction plots