

lowess — Lowess smoothing[Description](#)
[Options](#)
[References](#)[Quick start](#)
[Remarks and examples](#)
[Also see](#)[Menu](#)
[Methods and formulas](#)[Syntax](#)
[Acknowledgment](#)

Description

`lowess` carries out a locally weighted regression of *yvar* on *xvar*, displays the graph, and optionally saves the smoothed variable.

Warning: `lowess` is computationally intensive and may therefore take a long time to run on a slow computer. Lowess calculations on 1,000 observations, for instance, require performing 1,000 regressions.

Quick start

Locally weighted regression of *y1* on *x*

```
lowess y1 x
```

As above, but with a bandwidth of 0.4

```
lowess y1 x, bwidth(.4)
```

With running-mean smoothing

```
lowess y1 x, mean
```

Without the tricube weighting function

```
lowess y1 x, noweight
```

Generate a new variable *v* containing the smoothed values of *y1*

```
lowess y1 x, generate(v)
```

Adjust the mean of the smoothed values to equal the mean of the unsmoothed values

```
lowess y1 x, adjust
```

Lowess smoothing of categorical variable *y2* on *x* in terms of the log of the odds ratio

```
lowess y2 x, logit
```

Menu

Statistics > Nonparametric analysis > Lowess smoothing

Syntax

```
lowess yvar xvar [if] [in] [, options]
```

<i>options</i>	Description
Main	
<u>mean</u>	running-mean smooth; default is running-line least squares
<u>nweight</u>	suppress weighted regressions; default is tricube weighting function
<u>bwidth</u> (#)	use # for the bandwidth; default is <code>bwidth(0.8)</code>
<u>logit</u>	transform dependent variable to logits
<u>adjust</u>	adjust smoothed mean to equal mean of dependent variable
<u>nograph</u>	suppress graph
<u>generate</u> (<i>newvar</i>)	create <i>newvar</i> containing smoothed values of <i>yvar</i>
Plot	
<i>marker_options</i>	change look of markers (color, size, etc.)
<i>marker_label_options</i>	add marker labels; change look or position
Smoothed line	
<u>lineopts</u> (<i>cline_options</i>)	affect rendition of the smoothed line
Add plots	
<u>addplot</u> (<i>plot</i>)	add other plots to generated graph
Y axis, X axis, Titles, Legend, Overall, By	
<i>twoway_options</i>	any of the options documented in [G-3] <i>twoway_options</i>

yvar and *xvar* may contain time-series operators; see [U] 11.4.4 **Time-series varlists**.

Options

Main

- mean** specifies running-mean smoothing; the default is running-line least-squares smoothing.
- nweight** prevents the use of Cleveland's (1979) tricube weighting function; the default is to use the weighting function.
- bwidth**(#) specifies the bandwidth. Centered subsets of `bwidth() × N` observations are used for calculating smoothed values for each point in the data except for the end points, where smaller, uncentered subsets are used. The greater the `bwidth()`, the greater the smoothing. The default is 0.8.
- logit** transforms the smoothed *yvar* into logits. Predicted values less than 0.0001 or greater than 0.9999 are set to $1/N$ and $1 - 1/N$, respectively, before taking logits.
- adjust** adjusts the mean of the smoothed *yvar* to equal the mean of *yvar* by multiplying by an appropriate factor. This option is useful when smoothing binary (0/1) data.
- nograph** suppresses displaying the graph.
- generate**(*newvar*) creates *newvar* containing the smoothed values of *yvar*.

Plot

marker_options affect the rendition of markers drawn at the plotted points, including their shape, size, color, and outline; see [G-3] [marker_options](#).

marker_label_options specify if and how the markers are to be labeled; see [G-3] [marker_label_options](#).

Smoothed line

lineopts(*cline_options*) affects the rendition of the lowess-smoothed line; see [G-3] [cline_options](#).

Add plots

addplot(*plot*) provides a way to add other plots to the generated graph; see [G-3] [addplot_option](#).

Y axis, X axis, Titles, Legend, Overall, By

twoway_options are any of the options documented in [G-3] [twoway_options](#). These include options for titling the graph (see [G-3] [title_options](#)), options for saving the graph to disk (see [G-3] [saving_option](#)), and the *by*() option (see [G-3] [by_option](#)).

Remarks and examples

stata.com

By default, *lowess* provides locally weighted scatterplot smoothing. The basic idea is to create a new variable (*newvar*) that, for each *yvar* y_i , contains the corresponding smoothed value. The smoothed values are obtained by running a regression of *yvar* on *xvar* by using only the data (x_i, y_i) and a few of the data near this point. In *lowess*, the regression is weighted so that the central point (x_i, y_i) gets the highest weight and points that are farther away (based on the distance $|x_j - x_i|$) receive less weight. The estimated regression line is then used to predict the smoothed value \hat{y}_i for y_i only. The procedure is repeated to obtain the remaining smoothed values, which means that a separate weighted regression is performed for every point in the data.

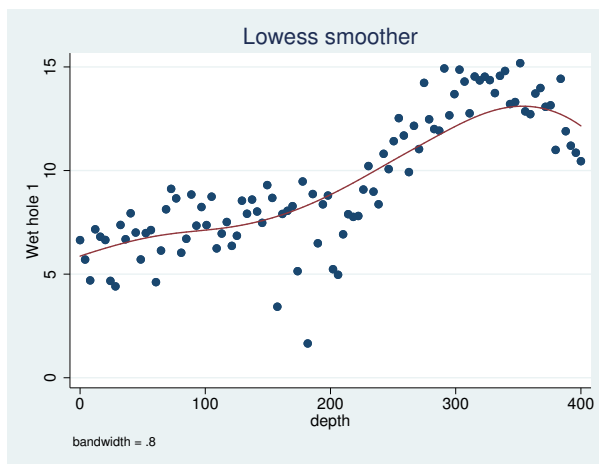
Lowess is a desirable smoother because of its locality—it tends to follow the data. Polynomial smoothing methods, for instance, are global in that what happens on the extreme left of a scatterplot can affect the fitted values on the extreme right.

► Example 1

The amount of smoothing is affected by *bwidth*(#). You are warned to experiment with different values. For instance,

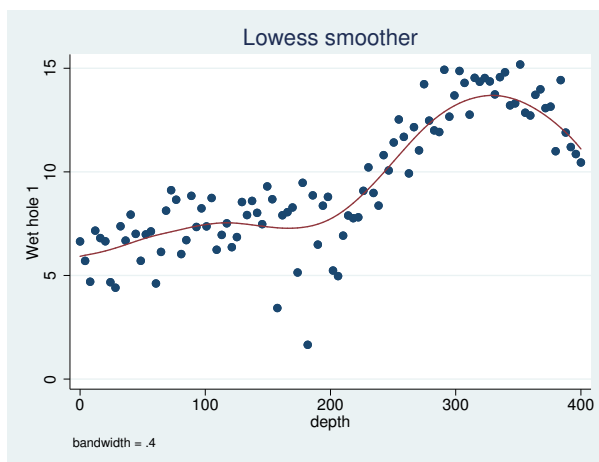
4 lowess — Lowess smoothing

```
. use http://www.stata-press.com/data/r15/lowess1
(example data for lowess)
. lowess h1 depth
```



Now compare that with

```
. lowess h1 depth, bwidth(.4)
```



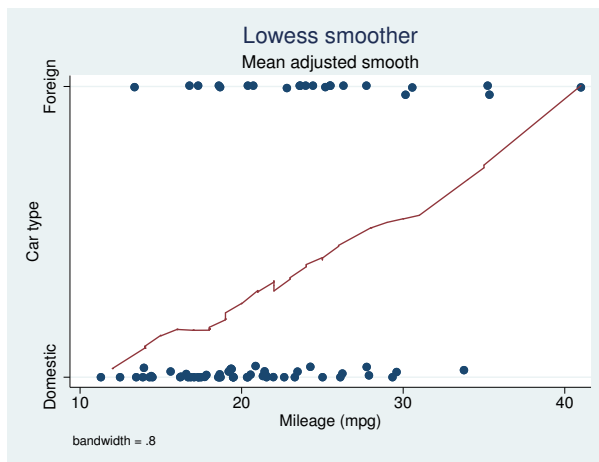
In the first case, the default bandwidth of 0.8 is used, meaning that 80% of the data are used in smoothing each point. In the second case, we explicitly specified a bandwidth of 0.4. Smaller bandwidths follow the original data more closely.



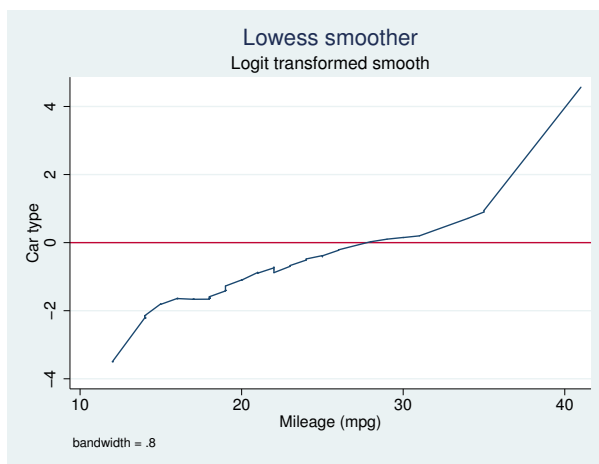
► Example 2

Two lowess options are especially useful with binary (0/1) data: `adjust` and `logit`. `adjust` adjusts the resulting curve (by multiplication) so that the mean of the smoothed values is equal to the mean of the unsmoothed values. `logit` specifies that the smoothed curve be in terms of the log of the odds ratio:

```
. use http://www.stata-press.com/data/r15/auto
(1978 Automobile Data)
. lowess foreign mpg, ylabel(0 "Domestic" 1 "Foreign") jitter(5) adjust
```



```
. lowess foreign mpg, logit yline(0)
```



With binary data, if you do not use the `logit` option, it is a good idea to specify `graph's jitter()` option; see [G-2] [graph twoway scatter](#). Because the underlying data (whether the car was manufactured outside the United States here) take on only two values, raw data points are more likely to be on top of each other, thus making it impossible to tell how many points there are. `graph's jitter()` option adds some noise to the data to shift the points around. This noise affects only the location of points on the graph, not the lowess curve.

When you specify the `logit` option, the display of the raw data is suppressed.

□ Technical note

`lowess` can be used for more than just lowess smoothing. Lowess can be usefully thought of as a combination of two smoothing concepts: the use of predicted values from regression (rather than means) for imputing a smoothed value and the use of the tricube weighting function (rather than a constant weighting function). `lowess` allows you to combine these concepts freely. You can use line smoothing without weighting (specify `noweight`), mean smoothing with tricube weighting (specify `mean`), or mean smoothing without weighting (specify `mean` and `noweight`).

□

Methods and formulas

Let y_i and x_i be the two variables, and assume that the data are ordered so that $x_i \leq x_{i+1}$ for $i = 1, \dots, N - 1$. For each y_i , a smoothed value y_i^s is calculated.

The subset used in calculating y_i^s is indices $i_- = \max(1, i - k)$ through $i_+ = \min(i + k, N)$, where $k = \lfloor (N \times \text{bwidth} - 0.5) / 2 \rfloor$. The weights for each of the observations between $j = i_-, \dots, i_+$ are either 1 (`noweight`) or the tricube (default),

$$w_j = \left\{ 1 - \left(\frac{|x_j - x_i|}{\Delta} \right)^3 \right\}^3$$

where $\Delta = 1.0001 \max(x_{i_+} - x_i, x_i - x_{i_-})$. The smoothed value y_i^s is then the (weighted) mean or the (weighted) regression prediction at x_i .

William Swain Cleveland (1943–) studied mathematics and statistics at Princeton and Yale. He worked for several years at Bell Labs in New Jersey and now teaches statistics and computer science at Purdue. He has made key contributions in many areas of statistics, including graphics and data visualization, time series, environmental applications, and analysis of Internet traffic data.

Acknowledgment

`lowess` is a modified version of a command originally written by Patrick Royston of the MRC Clinical Trials Unit, London, and coauthor of the Stata Press book *Flexible Parametric Survival Analysis Using Stata: Beyond the Cox Model*.

References

- Chambers, J. M., W. S. Cleveland, B. Kleiner, and P. A. Tukey. 1983. *Graphical Methods for Data Analysis*. Belmont, CA: Wadsworth.
- Cleveland, W. S. 1979. Robust locally weighted regression and smoothing scatterplots. *Journal of the American Statistical Association* 74: 829–836.
- . 1993. *Visualizing Data*. Summit, NJ: Hobart.
- . 1994. *The Elements of Graphing Data*. Rev. ed. Summit, NJ: Hobart.
- Cox, N. J. 2005. *Speaking Stata: Smoothing in various directions*. *Stata Journal* 5: 574–593.

- Goodall, C. 1990. A survey of smoothing techniques. In *Modern Methods of Data Analysis*, ed. J. Fox and J. S. Long, 126–176. Newbury Park, CA: Sage.
- Lindsey, C., and S. J. Sheather. 2010. [Model fit assessment via marginal model plots](#). *Stata Journal* 10: 215–225.
- Royston, P. 1991. [gr6: Lowess smoothing](#). *Stata Technical Bulletin* 3: 7–9. Reprinted in *Stata Technical Bulletin Reprints*, vol. 1, pp. 41–44. College Station, TX: Stata Press.
- Royston, P., and N. J. Cox. 2005. [A multivariable scatterplot smoother](#). *Stata Journal* 5: 405–412.
- Salgado-Ugarte, I. H., and M. Shimizu. 1995. [snp8: Robust scatterplot smoothing: Enhancements to Stata's ksm](#). *Stata Technical Bulletin* 25: 23–26. Reprinted in *Stata Technical Bulletin Reprints*, vol. 5, pp. 190–194. College Station, TX: Stata Press.
- Sasieni, P. D. 1994. [snp7: Natural cubic splines](#). *Stata Technical Bulletin* 22: 19–22. Reprinted in *Stata Technical Bulletin Reprints*, vol. 4, pp. 171–174. College Station, TX: Stata Press.

Also see

- [R] [lpoly](#) — Kernel-weighted local polynomial smoothing
- [R] [smooth](#) — Robust nonlinear smoother
- [D] [ipolate](#) — Linearly interpolate (extrapolate) values