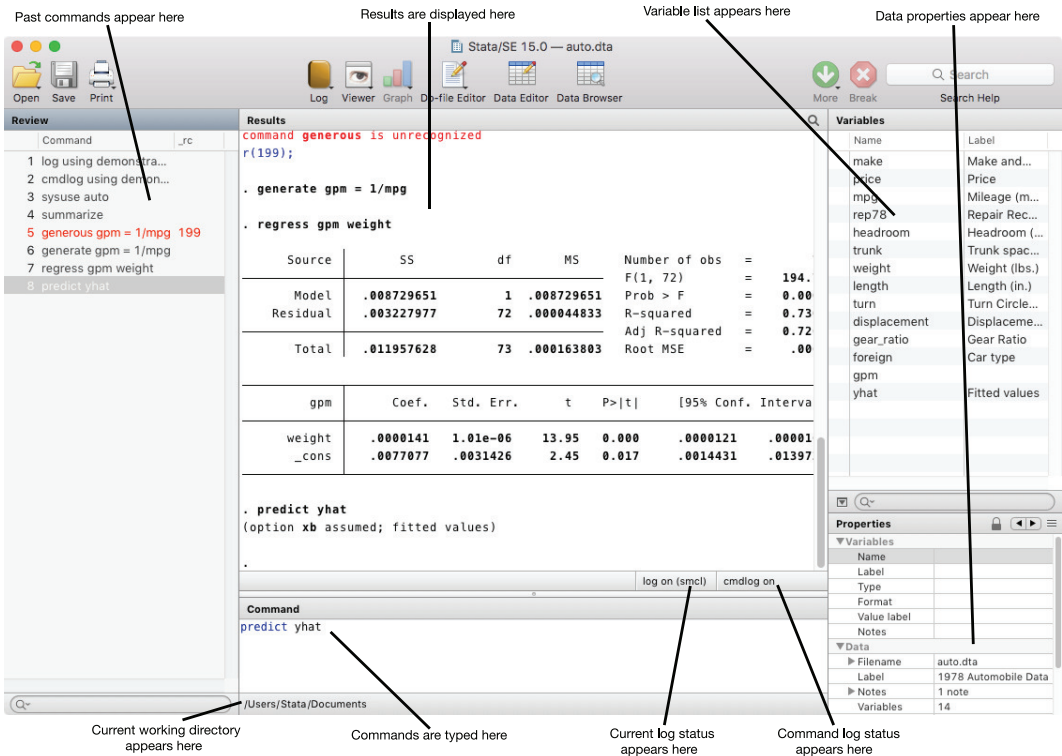


# 2 The Stata user interface

## The windows

This chapter introduces the core of Stata's interface: its main windows, its toolbar, its menus, and its dialogs.

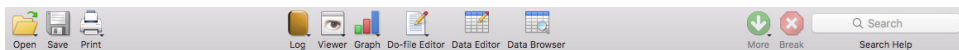


The five main windows are the Review, Results, Command, Variables, and Properties windows. Each window has its name in its title bar. These five windows are typically in use the whole time Stata is open. There are other, more specialized windows such as the Viewer, Data Editor, Variables Manager, Do-file Editor, Graph, and Graph Editor windows—these are discussed later in this manual.

To open any window or to reveal a window hidden by other windows, select the window from the **Window** menu, or select the proper item from the toolbar. You can also use Mission Control to reveal hidden windows, or use `Command-`` (left quote) to cycle through all open Stata windows. Many of Stata's windows have functionality that can be accessed by clicking on the right mouse button (right-clicking) within the window. If your mouse has only one button, press the *Control* key while pressing the mouse button to simulate a right-click. Right-clicking displays a contextual menu that, depending on the window, allows you to copy text, set the preferences for the window, or print the contents of the window. When you copy text or print, we recommend that you always right-click on the window rather than use the menu bar or toolbar so that you can be sure of where and what you are copying or printing.

## The toolbar

This is the toolbar:



The toolbar contains buttons that provide quick access to Stata's more commonly used features. If you forget what a button does, hold the mouse pointer over the button for a moment, and a tooltip will appear with a description of that button.

Buttons that include both an icon and an arrow display a menu if you hold down the mouse button. Here is an overview of the toolbar buttons and their functions:



**Open** opens a Stata dataset. Click on the button to open a dataset with the *Open* dialog. Hold down the button to select a dataset from a menu of recently opened datasets.



**Save** saves the Stata dataset currently in memory to disk.



**Print** displays a list of windows. Select a window name to print its contents.



**Log** begins a new log or closes, suspends, or resumes the current log. See [GSM] 16 [Saving and printing results by using logs](#) for an explanation of log files. You can also choose a file to view in the Viewer.



**Viewer** opens the Viewer or brings a Viewer to the front of all other windows. Click on the button to open a new Viewer tab. See [GSM] 3 [Using the Viewer](#) for more information.



**Graph** brings the Graph window to the front of all other windows. Click on the button to bring the topmost Graph window to the front. Click and hold to select a graph to bring to the front. See [The Graph button](#) in [GSM] 14 [Graphing data](#) for more information.



**Do-file Editor** opens the Do-file Editor or brings a Do-file Editor to the front of all other windows. Click on the button to open a new Do-file Editor. Click and hold to select a Do-file Editor to bring to the front. See [GSM] 13 [Using the Do-file Editor—automating Stata](#) for more information.



**Data Editor** opens the Data Editor or brings the Data Editor to the front of the other Stata windows. See [GSM] 6 [Using the Data Editor](#) for more information.



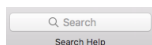
**Data Browser** opens the Data Editor in browse mode. See [Browse mode](#) in [GSM] 6 [Using the Data Editor](#) for more information.



**More** tells Stata to continue when it has paused in the middle of long output. Click and hold to choose whether to run the command to completion. See [GSM] B.5 [More](#) for more information.



**Break** stops the current task in Stata. See [GSM] 10 [Listing data and basic command syntax](#) for more information.



**Search Help** Searches for help for both official and user-written commands. See [GSM] 4 [Getting help](#) for more information.

## The Command window

Commands are submitted to Stata from the Command window. The Command window supports basic text editing, copying and pasting, a command history, function-key mapping, and variable-name completion. The Command window also uses the same syntax highlighting as the Do-file Editor. See [\[GSM\] 13 Using the Do-file Editor—automating Stata](#) for more information.


From the Command window, pressing

<i>Page Up</i>	steps backward through the command history.
<i>Page Down</i>	steps forward through the command history.
<i>Tab</i>	autocompletes a partially typed variable name, when possible, or presents a list of similar names if there could be more than one completion. If the name starts with a double-quote, <i>Tab</i> attempts to autocomplete a filename in the same manner.

See [\[U\] 10 Keyboard use](#) for more information about keyboard shortcuts for the Command window.

The command history allows you to recall a previously submitted command, edit it if you wish, and then resubmit it. Commands submitted by Stata's dialogs are also included in the command history, so you can recall and submit a command without having to open the dialog again.

## The Results window

The Results window contains all the commands and their textual results you have entered during the Stata session. While you can scroll through the Results window to look at work you have done, it is much simpler to search within the Results window by using the find bar. By default, the find bar is hidden. You can toggle its visibility by clicking the magnifying glass button, , in the Results window title bar.

You can clear out the Results window at any time by right-clicking in the Results window and selecting **Clear results** from the contextual menu. This action is not undoable.

## The Review window

The Review window shows the history of commands that have been entered. It displays successful commands in black and unsuccessful commands, along with their error codes, in red.

At the base of the Review window is a text entry field that filters the commands appearing in the Review window. By default, the filter ignores case and finds any commands containing any of the words in the filter. Clicking on the arrow by the magnifying glass allows you to change this behavior. You can hide the commands that produced an error by clicking on the arrow and selecting the *Hide Errors* item from the list that appears.

No commands are deleted by using these tools—all that is affected is their visibility.

To enter a command from the Review window, you can

- Click once on a past command to copy it to the Command window, replacing the contents of the Command window.
- Double-click on a past command to resubmit it. Executing the command adds the command to the bottom of the Review window.

Right-clicking on the Review window displays a menu from which you can select various actions:

- **Cut** removes the selected commands from the Review window and places them on the Clipboard.

- **Copy** copies the selected commands to the Clipboard.
- **Delete** removes the selected commands from the Review window.
- **Select all** selects all the commands in the Review window, including those before and after the commands currently displayed.
- **Clear all** clears out all the commands from the Review window, including those before and after the commands currently displayed.
- **Do selected** submits all the selected commands and adds them to the bottom of the command history. Stata will attempt to run all the selected commands, even those containing errors, and will not stop even if a command causes an error.
- **Send selected to Do-file Editor** places all the selected commands into a new Do-file Editor window.
- **Save all...** brings up a *Save review contents* dialog, which allows you to save all the commands in the Review window, including those before and after the commands currently displayed, in a *do-file*. (See [GSM] 13 Using the Do-file Editor—automating Stata for more information on do-files.)
- **Save selected...** brings up a *Save review contents* dialog, which allows you to save the selected commands in the Review window in a do-file.
- **Preferences...** allows you to edit the preferences for the Review window.

## The Variables window

The Variables window shows the list of variables in the dataset, along with selected properties of the variables. By default, it shows all the variables and their variable labels. You can change what properties get displayed by right-clicking on the header of any column of the Variables window.

Click once on a variable in the Variables window to select it. Multiple variables can be selected in the usual fashion, either by *Command*-clicking on nonadjacent variables or by clicking on a variable and *shift*-clicking on a second variable to select all intervening variables.

Double-clicking on a variable in the Variables window puts the selected variable at the insertion point in the Command window. If multiple variables are selected, double-clicking on any selected variable will put all the selected variables at the insertion point in the Command window.

The leftmost column of the Variables window is called the one-click paste column. You can also send variables to the Command window by hovering the mouse over the one-click paste column of the Variables window and clicking on the arrow that appears.

The Variables window supports filtering and reordering of variables. Text entered in the entry field to the right of the magnifying glass will filter the variables appearing in the Variables window. The filter is applied to all visible columns and shows all variables that match the criteria in at least one column. By default, the filter will ignore case and show any variables for which at least one column contains any of the words in the filter. Clicking on the arrow by the magnifying glass will allow you to change this behavior.purposely vague to allow changes mid-release

You can reorder the variables in the Variables window by clicking on any column header. The first click sorts in ascending order, the second click sorts in descending order, and the third click puts the variables back in dataset order. Thus clicking on the *Name* column header will make the Variables window display the variables in alphabetical order. Sorting in the Variables window is live, so if you change a property of a variable when the Variables window is sorted by that property, it will automatically move the variable to its proper location. Reordering the display order of the variables in the Variables window does not affect the order of the variables in the dataset itself.

Right-clicking on a variable in the Variables window displays a menu from which you can select

- **Keep only variable** “*varname*” (or **Keep only selected variables** if multiple variables are selected) to keep just the selected variables in the dataset in memory. You will be asked for confirmation. This affects only the dataset in memory, not the dataset as saved on your disk. See [GSM] 12 [Deleting variables and observations](#) for more information.
- **Drop variable** “*varname*” (or **Drop selected variables** if multiple variables are selected) to drop, or eliminate, the selected variables from the dataset in memory. You will be asked for confirmation. Just as above, this affects only the dataset in memory, not the dataset as saved on your disk. See [GSM] 12 [Deleting variables and observations](#) for more information.
- **Copy varlist** to copy the selected variable names to the clipboard.
- **Select all** to select all variables in the dataset that satisfy the filter conditions. If no filter has been specified, all variables will be selected.
- **Send varlist to Command window** to send all selected variables to the Command window.
- **Preferences...** to change the preferences for the Variables window.

Items from the contextual menu issue standard Stata commands, so working by right-clicking is just like working directly in the Command window.



If you would like to hide the Variables window, grab the divider between the Variables window and the Results window and drag it all the way to the right. This is like resizing the Variables window to have zero width. Hiding the Variables window will also hide the Properties window.

To reveal a hidden Variables window, select **Window > Variables**.

## The Properties window

The Properties window displays variable and dataset properties. If a single variable is selected in the Variables window, its properties are displayed. If there are multiple variables selected in the Variables window, the Properties window will display properties that are common across all selected variables.

Clicking the lock icon in the Properties window title bar toggles the ability to alter properties of the selected variables. By default, changes are not allowed. Once the properties are unlocked, you can make any changes to variable or dataset properties you like. Each change you make will create a command that appears in the Results and Command windows, as well as in any command log, so the changes are reproducible. Using the Properties window is one of the simplest ways of managing notes, changing variable and value labels, and changing display formats. See [D] [notes](#), [D] [label](#), and [D] [format](#).

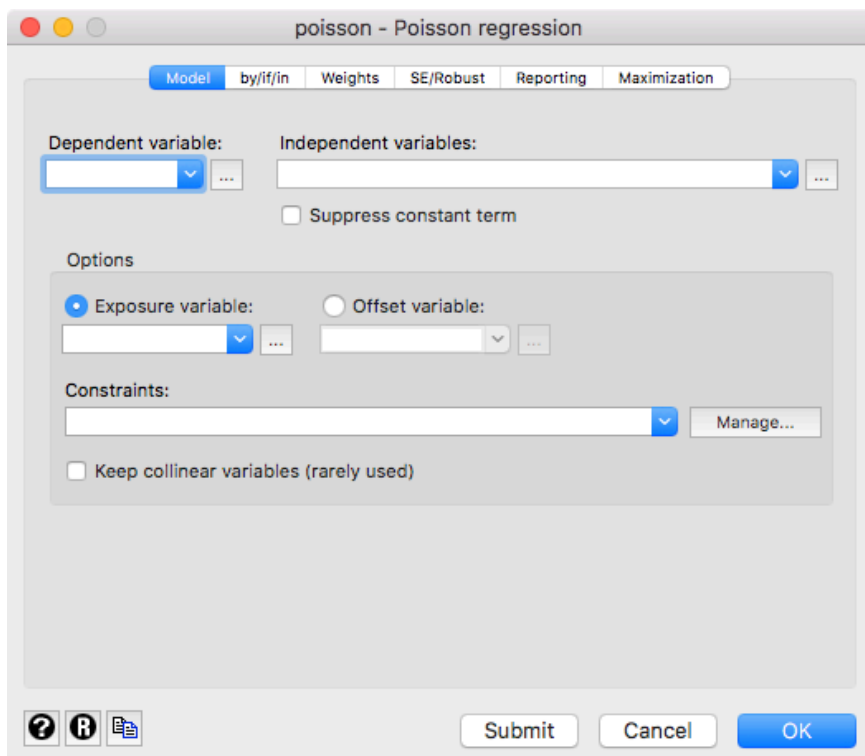
Clicking the arrow buttons next to the lock icon will select the previous or next variable shown in the Variables window, and that selection will be reflected in the Properties window. If you would like to hide the Properties window, click on the disclosure control  at the base of the Variables window. If you would like to reveal a hidden Properties window, click on the disclosure control  at the base of the Variables window.

You should also investigate the Variables Manager, explained in [GSM] 7 [Using the Variables Manager](#), because it extends these capabilities and provides a good interface for managing variables.

## Menus and dialogs

There are two ways by which you can tell Stata what you would like it to do: you can use menus and dialogs, or you can use the Command window. When you worked through the sample session in [\[GSM\] 1 Introducing Stata—sample session](#), you saw that both ways have strengths. We will discuss the menus and dialogs here.

Stata's **Data**, **Graphics**, and **Statistics** menus provide point-and-click access to almost every command in Stata. As you will learn, Stata is fully programmable, and Stata users can even create their own dialogs and menus. The **User** menu provides a place for programmers to add their own menu items. Initially, it contains only some empty submenus. As an example, suppose you wish to perform a Poisson regression. You could type Stata's `poisson` command, or you could select **Statistics > Count outcomes > Poisson regression**, which would display this dialog:

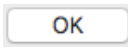


This dialog provides access to all the functionality of Stata's `poisson` command. Because the dependent and independent variables must be numeric, you will find that the combo box will display only numeric variables for choosing. The `poisson` command has many options that can be accessed by clicking on the multiple tabs across the top of the dialog. The first time you use the dialog for a command, it is a good idea to look at the contents of each tab so that you will know all the dialog's capabilities.

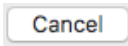
The dialogs for many commands have the **by/if/in** and **Weights** tabs. These provide access to Stata's commands and qualifiers for controlling the estimation sample and dealing with weighted data. See [\[U\] 11 Language syntax](#) for more information on these features of Stata's language.

The dialogs for most estimation commands have the **Maximization** tab for setting the maximization options (see [R] [maximize](#)). For example, you can specify the maximum number of iterations for the optimizer.

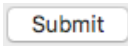
Most dialogs in Stata provide the same six buttons you see at the bottom of the *poisson* dialog above.



**OK** issues a Stata command based on how you have filled out the fields in the dialog and then closes the dialog.



**Cancel** closes the dialog without doing anything—just as clicking on the dialog’s red close button does.



**Submit** issues a command just like **OK** but leaves the dialog on the screen so that you can make changes and issue another command. This feature is handy when, for example, you are learning a new command or putting together a complicated graph.



**Help** provides access to Stata’s help system. Clicking on this button will typically take you to the help file for the Stata command associated with the dialog. Clicking on it here would take you to the *poisson* help file. The help file will have tabs above groups of options to show which dialog tab contains which options.



**Reset** resets the dialog to its default state. Each time you open a dialog, it will remember how you last filled it out. If you wish to reset its fields to their default values at any time, simply click on this button.



**Copy command to Clipboard** behaves much like the **Submit** button, but rather than issuing a command, it copies the command to the Clipboard. The command can then be pasted elsewhere (such as in the Do-file Editor).

The command issued by a dialog is submitted just as if you had typed it by hand. You can see the command in the Results window and in the Review window after it executes. Looking carefully at the full command will help you learn Stata’s command syntax.

In addition to being able to access the dialogs for Stata commands through Stata’s menus, you can also invoke them by using two other methods. You may know the name of a Stata command for which you want to see a dialog, but you might not remember how to navigate to that command in the menu system. Simply type `db commandname` to launch the dialog for *commandname*:

```
. db poisson
```

You will also find access to the dialog for a command in that command’s help file; see [GSM] 4 [Getting help](#) for more details.

As you read this manual, we will present examples of Stata commands. You may type those examples as presented, but you should also experiment with submitting those commands by using their dialogs. Use the `db` command described above to quickly launch the dialog for any command that you see in this manual.

## The working directory

If you look at the screenshot on page [‘main4win’](#), you will notice the status bar at the base of the main Stata window that contains the name of the current working directory `/Users/mydir/Documents`. This path indicates that `/Users/mydir/Documents` is the current working directory. Each session, this is set to the working directory you were using when you last quit Stata. The current working directory is the folder where graphs and datasets will be saved when typing commands such as `save filename`. It does not affect the behavior of menu-driven file actions such as **File > Save** or **File > Open...** Once you have started Stata, you can change the current working directory with the `cd` command. See [\[D\] cd](#) for full details. Stata always displays the name of the current working directory so that it is easy to tell where your graphs and datasets will be saved.